



INDOFINE Chemical Company, Inc.

121 Stryker Lane, Bldg. 30, Suite 1 • Hillsborough, NJ 08844 • U.S.A.

Phone: (908) 359-6778 • FAX: (908) 359-1179

website: www.indofinechemical.com

e-mail: chemical@indofinechemical.com

CERTIFICATE OF ANALYSIS

Catalog Number: 06-782

Product Name: **KUKOAMINE A**

CAS Number: [75288-96-9]

Lot Number: 7030301

Chemical Formula: $C_{28}H_{42}N_4O_6$

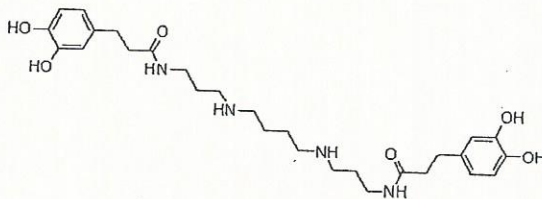
Molecular Weight: 530.67

Appearance: White powder

Loss on Drying: 1.1%

Storage: Store at $-20^{\circ}C$

Purity(HPLC): 96.1%





INDOFINE Chemical Company, Inc.

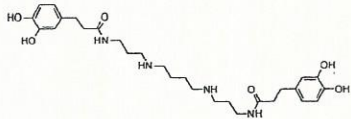
121 Stryker Lane, Bldg. 30, Suite 1 • Hillsborough, NJ 08844 • U.S.A.

Phone: (908) 359-6778 • FAX: (908) 359-1179

website: www.indofinechemical.com

e-mail: chemical@indofinechemical.com

HPLC ANALYSIS

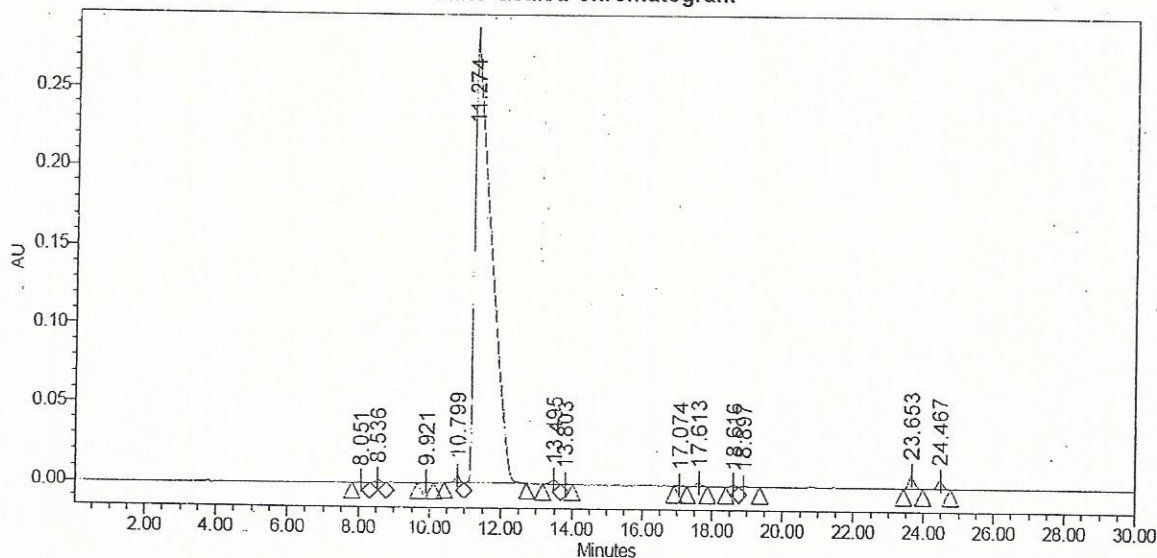


Catalog No.: 06-782
Product Name: Kukoamine A
Lot No.: 7030301

SAMPLE INFORMATION

Sample Name:	Kukoamine A	7030301	Acquired By:	System
Sample Type:	Unknown		Sample Set Name:	
Vial:	20		Acq. Method Set:	Kukoamine A
Injection #:	1		Processing Method:	Samples
Injection Volume:	10.00 ul		Channel Name:	280.0nm
Run Time:	30.0 Minutes		Proc. Chnl. Descr.:	PDA 280.0 nm

Auto-Scaled Chromatogram



Peak Results

Name	RT	Area	% Area	USP Plate Count	USP Resolution
1	8.051	8249	0.09	14784.71	
2	8.536	25707	0.27	12076.10	1.72
3	9.921	12099	0.13	24888.72	5.20
4	10.799	49833	0.52	32642.73	3.64
5	11.274	9122323	96.10	1980.72	0.75
6	13.495	39434	0.42	27543.22	3.33
7	13.803	7116	0.07	33992.56	0.98
8	17.074	9191	0.10	51720.35	10.71
9	17.613	28475	0.30	67266.66	1.85
10	18.616	14676	0.15	68822.01	3.48
11	18.897	7307	0.08	77386.01	0.67



INDOFINE Chemical Company, Inc.

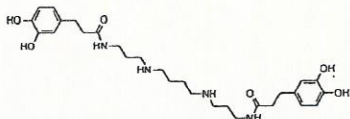
121 Stryker Lane, Bldg. 30, Suite 1 • Hillsborough, NJ 08844 • U.S.A.

Phone: (908) 359-6778 • FAX: (908) 359-1179

website: www.indofinechemical.com

e-mail: chemical@indofinechemical.com

HPLC ANALYSIS



Catalog No.: 06-782
Product Name: Kukoamine A
Lot No.: 7030301

Peak Results

	Name	RT	Area	% Area	USP Plate Count	USP Resolution
12		23.653	100734	1.06	100158.25	11.28
13		24.467	66904	0.70	95626.84	2.70